

“Worms” Cotton ID Key

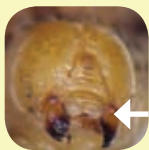
Ed Bynum, Steve Byrns, Tom Fuchs, Rick Minzenmayer and Warren Multer*

Cotton Bollworm – Tobacco Budworm

- Both worms are green to brown with stripes the length of the body.
- Heads are tan to amber.
- Both worms have prominent black hairs on the body.
- Closely examine mouthparts (mandibles) with a hand lens to separate the species.

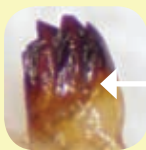


(Photo: M. Spellman)



(Photo: P. Roberts)

Head capsule showing mandibles.



(Photo: P. Roberts)

Cotton bollworm.
Inside tooth is absent.

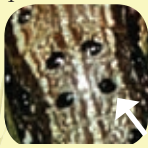


(Photo: P. Roberts)

Tobacco budworm.
Inside tooth is present.

Fall Armyworm

- Head is tan to dark with a white inverted “Y.”
- Four black dots on the rear of the worm form a “square.”



(Photos: M. Spellman)

Beet Armyworm

- The body is usually light green and hairless.
- There are fine white lines along the back, with a broader stripe on each side.
- A small black spot is on each side of the body above the second true leg.



(Photos: M. Spellman)

Southern Armyworm



(Photo: John L. Capinera)

- The body is gray to black with two narrow white lines along the top.
- A series of dark, triangular markings can be seen along the upper body.
- A broad, yellowish or whitish stripe runs along the side of the body.
- A dark spot may be visible on the first abdominal segment.

Yellowstriped Armyworm



(Photo: John L. Capinera)

- The body is pale gray to jet black.
- Along the side of the body is a broad, brown band between two cream or white lines.
- A dark spot appears on the side of the fourth body segment (behind the third true leg).
- Triangular black spots on the upper side of the body are often distinct.

Cabbage Looper



(Photos: M. Spellman)

- The worm “inches” or loops when crawling.
- There are three thick pairs of prolegs near the rear of the body.
- A single stripe is seen along the side of the body.

*Respectively, Extension Agent—IPM, Extension Communications Specialist, Extension Entomologist, and Extension Agents—IPM, The Texas A&M University System.

Photo credits: John L. Capinera, University of Florida
Philip Roberts, University of Georgia
Martin Spellman, University of Delaware

Background photos by Scott Bauer/USDA

Partial funding for this publication came from USDA-CSREES through the Texas IPM Program. We acknowledge Virginia Cooperative Extension and the Virginia IPM Program, Dr. Ames Herbert, IPM Coordinator.

Produced by Agricultural Communications, The Texas A&M University System
Extension publications can be found on the Web at: <http://tcebookstore.org>

Visit Texas Cooperative Extension at <http://texasextension.tamu.edu>

Educational programs conducted by Texas Cooperative Extension serve people of all ages regardless of socioeconomic level, race, color, sex, religion, handicap or national origin.

Issued in furtherance of Cooperative Extension Work in Agriculture and Home Economics, Acts of Congress of May 8, 1914, as amended, and June 30, 1914, in cooperation with the United States Department of Agriculture. Edward G. Smith, Director, Texas Cooperative Extension, The Texas A&M University System.
1.5M, New