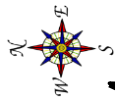
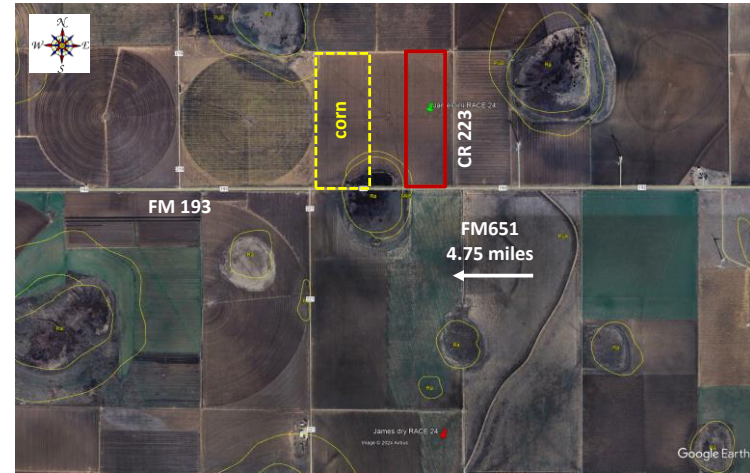




Grower Cooperator: Jonathan James  
 Texas A&M AgriLife: Ken Legé, Ph.D.  
 Location: Mt. Blanco, TX (Crosby Co)  
 Replicates: 3  
 Plot Size: 12 rows x ~1/2 mi  
 Row Spacing: 40"  
 Beds: No  
 Previous crop(s): Cotton  
 Soil type: Pullman Silty Clay Loam  
 Irrigation: Drip (80"; ~3.7 gpm)

Planting Date: 5/22/2024  
 Seed Treatments: Various fungicide+insecticide  
 Moist. @ planting: Fair-Good  
 Soil Temp @ planting: 71F @2"; 70F @6"  
 Seed/Acre: 45,000  
 GPS Lat: 33.804379  
 GPS Long: -101.160784  
 Elevation: 3056  
 Harvest Date:



Orange stakes on north end on easternmost row of each plot

12 rows border - DP1822XF		
101	DP1822XF	12 rows
102	DP2335B3XF	12 rows
103	FM765AX	12 rows
104	FM868AXTP	12 rows
105	PHY332W3FE	12 rows
106	PHY350W3FE	12 rows
201	PHY350W3FE	12 rows
202	DP2335B3XF	12 rows
203	DP1822XF	12 rows
204	FM868AXTP	12 rows
205	FM765AX	12 rows
206	PHY332W3FE	12 rows
301	FM765AX	12 rows
302	DP1822XF	12 rows
303	DP2335B3XF	12 rows
304	FM868AXTP	12 rows
305	PHY332W3FE	12 rows
306	PHY350W3FE	12 rows
Remainder of field - DP1822XF		

North turnrow

Rep 1

Rep 2

Rep 3

FM193