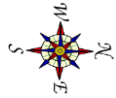
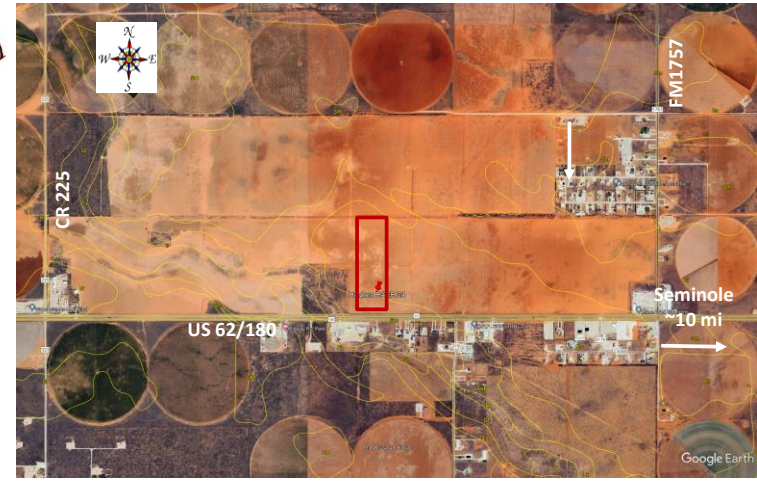


**Replicated Agronomic Cotton Evaluation
 Enlist-Only Location**



Grower Cooperator: Greg Hughes
 Texas A&M AgriLife: Ken Legé, Ph.D.
 Location: Seminole, TX (Gaines Co)
 Replicates: 3
 Plot Size: 8 rows x ~2640'
 Row Spacing: 40"
 Beds: No
 Previous crop(s): Cotton
 Soil type: Patricia/Arvana Fine Sand
 Irrigation: None

Planting Date: 5/23/2024
 Seed Treatments: TRiO
 Moist. @ planting: Dry
 Soil Temp @ planting: 96F @2"; 83F @6"
 Seed/Acre: 26,138
 GPS Lat: 32.72742
 GPS Long: -102.818486
 Elevation: 3426
 Harvest Date:



Orange stakes on the south end on the westernmost row of each plot

| | | | |
|---------------------------------|------------|--------|-------|
| 16 rows - PHY480W3FE | | | |
| 101 | PHY332W3FE | 8 rows | Rep 3 |
| 102 | PHY350W3FE | 8 rows | |
| 103 | PHY390W3FE | 8 rows | |
| 104 | PHY415W3FE | 8 rows | |
| 105 | PHY443W3FE | 8 rows | |
| 106 | PHY475W3FE | 8 rows | |
| 201 | PHY415W3FE | 8 rows | Rep 2 |
| 202 | PHY390W3FE | 8 rows | |
| 203 | PHY475W3FE | 8 rows | |
| 204 | PHY443W3FE | 8 rows | |
| 205 | PHY350W3FE | 8 rows | |
| 206 | PHY332W3FE | 8 rows | |
| 301 | PHY443W3FE | 8 rows | Rep 1 |
| 302 | PHY475W3FE | 8 rows | |
| 303 | PHY332W3FE | 8 rows | |
| 304 | PHY350W3FE | 8 rows | |
| 305 | PHY390W3FE | 8 rows | |
| 306 | PHY415W3FE | 8 rows | |
| Remainder of field - PHY480W3FE | | | |

US 62/180 (vertical label on left side of table)

North turnrow (vertical label on right side of table)