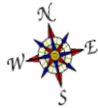
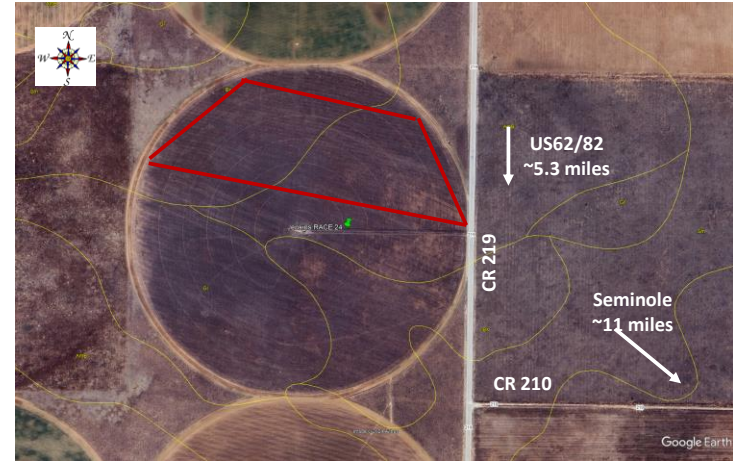




**Replicated Agronomic Cotton Evaluation
Enlist-Only Location**



| | | | |
|---------------------|---|-----------------------|------------------|
| Grower Cooperator: | Sawyer Jenkins | Planting Date: | 5/23/2024 |
| Texas A&M AgriLife: | Ken Legé, Ph.D. | Seed Treatments: | TRiO |
| Location: | Seminole, TX (Gaines Co) | Moist. @ planting: | Very Good |
| Replicates: | 3 | Soil Temp @ planting: | 74F @2"; 76F @6" |
| Plot Size: | 8 rows x ~2640' | Seed/Acre: | 30,000 |
| Row Spacing: | 40" | GPS Lat: | 32.80223 |
| Beds: | No | GPS Long: | -102.798073 |
| Previous crop(s): | Wheat fallow | Elevation: | 3443 |
| Soil type: | Amarillo/Patricia Loamy Fine Sand/Fine Sand | Harvest Date: | |
| Irrigation: | LEPA (1-2 gpma) | | |



Orange stakes on east end on southernmost row of each plot

| | | | |
|-----------------------------------|------------|-----|--------|
| Remainder of field - PHY 332 W3FE | | | CR 219 |
| 8 rows | PHY475W3FE | 306 | |
| 8 rows | PHY443W3FE | 305 | |
| 8 rows | PHY400W3FE | 304 | |
| 8 rows | PHY332W3FE | 303 | |
| 8 rows | PHY415W3FE | 302 | |
| 8 rows | PHY411W3FE | 301 | |
| 8 rows | PHY443W3FE | 206 | |
| 8 rows | PHY475W3FE | 205 | |
| 8 rows | PHY332W3FE | 204 | |
| 8 rows | PHY400W3FE | 203 | |
| 8 rows | PHY411W3FE | 202 | |
| 8 rows | PHY415W3FE | 201 | |
| 8 rows | PHY475W3FE | 106 | |
| 8 rows | PHY443W3FE | 105 | |
| 8 rows | PHY415W3FE | 104 | |
| 8 rows | PHY411W3FE | 103 | |
| 8 rows | PHY400W3FE | 102 | |
| 8 rows | PHY332W3FE | 101 | |
| Remainder of field - PHY 332 W3FE | | | |

Pivot point ●



Project # 24-917TX