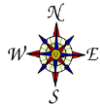
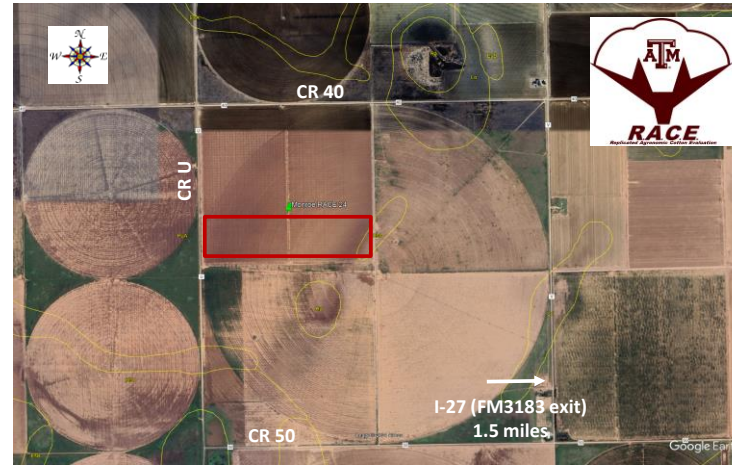


Replicated Agronomic Cotton Evaluation
XtendFlex Only

Grower Cooperator: Alan Monroe
 Texas A&M AgriLife: Ken Legé, Ph.D.
 Location: Plainview, TX (Hale Co)
 Replicates: 3
 Plot Size: 8 rows x ~1/2 mi
 Row Spacing: 30"
 Beds: No
 Previous crop(s): Failed cotton, then sorghum
 Soil type: Pullman Clay Loam
 Irrigation: Drip (30"; ~3.2 gpma)

Planting Date: 5/14/2024
 Seed Treatments: Various fungicide+insecticide
 Moist. @ planting: Very Good
 Soil Temp @ planting: 75.4F @2"; 67.2F @6"
 Seed/Acre: 55,000
 GPS Lat: 34.258149
 GPS Long: -101.739086
 Elevation: 3411
 Harvest Date:



Orange stakes on southernmost row of each plot on west end.

Remainder of field - DP1822XF		16 rows	
CR U	101	Armor9413XF	8 rows
	102	Armor9371B3XF	8 rows
	103	DP1822XF	8 rows
	104	DP2335B3XF	8 rows
	105	FM765AX	8 rows
	106	FM823AXTP	8 rows
	107	NG3434B3XF	8 rows
	108	NG3457B3XF	8 rows
	201	Armor9371B3XF	8 rows
	202	Armor9413XF	8 rows
	203	FM823AXTP	8 rows
	204	FM765AX	8 rows
	205	NG3457B3XF	8 rows
	206	NG3434B3XF	8 rows
	207	DP2335B3XF	8 rows
	208	DP1822XF	8 rows
301	NG3434B3XF	8 rows	
302	NG3457B3XF	8 rows	
303	DP1822XF	8 rows	
304	DP2335B3XF	8 rows	
305	Armor9413XF	8 rows	
306	Armor9371B3XF	8 rows	
307	FM765AX	8 rows	
308	FM823AXTP	8 rows	
Remainder of field - DP 1822XF			