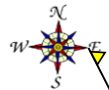
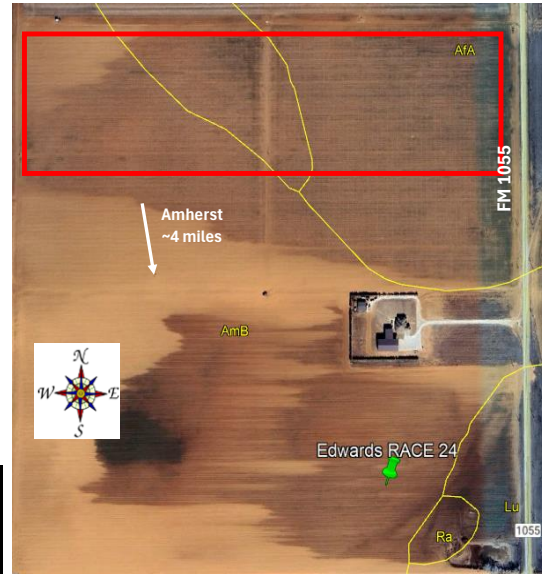




**Replicated Agronomic Cotton Evaluation  
XtendFlex Only Location**



Grower Cooperator:	Jeff Edwards	Planting Date:	6/5/2024 replant (original planting 5/20/2024)
Texas A&M AgriLife:	Ken Legé, Ph.D.	Seed Treatments:	Various fungicide/insecticide
Location:	Amherst, TX (Lamb Co)	Moist. @ planting:	Adequate
Replicates:	3	Soil Temp @ planting:	99F @2"; 83F @6"
Plot Size:	8 rows x ~2640'	Seed/Acre:	Avg 47,000
Row Spacing:	40"	GPS Lat:	34.058405
Beds:	Yes	GPS Long:	-102.428019
Previous crop(s):	Failed cotton/rye cover	Elevation:	3650
Soil type:	Amarillo Fine Sandy Loam	Harvest Date:	
Irrigation:	Drip (80", 2 gpm)		



Orange stakes on the east end of the northernmost rows of each plot

Field Road

16 Rows Border

Turnrow	8 rows	<i>(east half planted ~30,000 seed/A)</i>	Armor9413XF	101	Rep 1	FM 1055
	8 rows		Armor9371B3XF	102		
	8 rows		DP1820B3XF	103		
	8 rows		DP1822XF	104		
	8 rows		DP2335B3XF	105		
	8 rows		FM765AX	106		
	8 rows		FM823AXTP	107		
	8 rows		NG3434B3XF	108		
	8 rows		NG3457B3XF	109		
	8 rows		NG4409B3XF	110		
	8 rows		NG3434B3XF	201	Rep 2	
	8 rows		FM823AXTP	202		
	8 rows		FM765AX	203		
	8 rows		DP2335B3XF	204		
	8 rows		NG4409B3XF	205		
	8 rows		NG3457B3XF	206		
	8 rows		DP1822XF	207	Rep 3	
	8 rows		DP1820B3XF	208		
	8 rows		Armor9371B3XF	209		
	8 rows		Armor9413XF	210		
	8 rows		NG3457B3XF	301		
	8 rows		NG4409B3XF	302		
	8 rows		Armor9413XF	303		
	8 rows		Armor9371B3XF	304		
	8 rows		DP1820B3XF	305		
	8 rows		DP1822XF	306		
	8 rows		FM823AXTP	307		
	8 rows		NG3434B3XF	308		
	8 rows		DP2335B3XF	309		
	8 rows		FM765AX	310		
	<i>Remainder of field</i>					



Project # 24-917TX