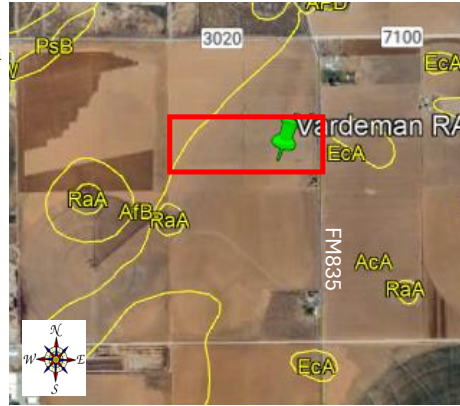




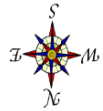
**Replicated Agronomic Cotton Evaluation  
Mixed Technology**



Project # 24-9177X

Grower Cooperator: Vardeman Farms  
 Texas A&M AgriLife: Ken Legé, Ph.D.  
 Location: Lubbock, TX (Lubbock Co)  
 Replicates: 3  
 Plot Size: 8 rows x ~2640'  
 Row Spacing: 40"  
 Beds: No  
 Previous crop(s): Cotton  
 Soil type: Acuff Loam/Amarillo Fine Sandy Loam  
 Irrigation: Drip (80"; ~5gpm)

Planting Date: 5/15/2024  
 Seed Treatments: Various fungicide+insecticide  
 Moist. @ planting: Good  
 Soil Temp @ planting: 72F @ 2"; 70F @ 6"  
 Seed/Acre: 41,000  
 GPS Lat: 33.514369  
 GPS Long: -101.730469  
 Elevation: 3143  
 Harvest Date:



Orange stakes on southernmost row of each plot on east end.

house						
96 rows from South side						
FM 835	101	DP1820B3XF	8 rows	Rep 1	West Turnrow	
	102	DP2335B3XF	8 rows			
	103	FM868AXTP	8 rows			
	104	NG3434B3XF	8 rows			
	105	NG3457B3XF	8 rows			
	106	PHY332W3FE	8 rows			
	107	PHY411W3FE	8 rows			
	108	ST6000AXTP	8 rows			
	201	ST6000AXTP	8 rows	Rep 2		
	202	PHY411W3FE	8 rows			
	203	NG3434B3XF	8 rows			
	204	FM868AXTP	8 rows			
	205	DP2335B3XF	8 rows			
	206	DP1820B3XF	8 rows			
	207	PHY332W3FE	8 rows			
	208	NG3457B3XF	8 rows			
	301	FM868AXTP	8 rows	Rep 3		
	302	NG3434B3XF	8 rows			
	303	DP1820B3XF	8 rows			
	304	DP2335B3XF	8 rows			
	305	PHY411W3FE	8 rows			
	306	ST6000AXTP	8 rows			
	307	NG3457B3XF	8 rows			
	308	PHY332W3FE	8 rows			
	Remainder of field - PHY332W3FE					