

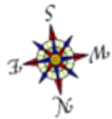
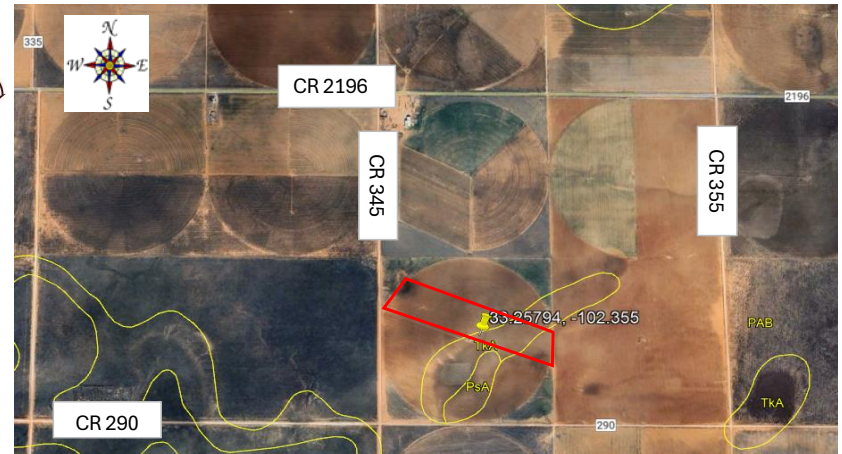


## Replicated Agronomic Cotton Evaluation Mixed Technology



Grower Cooperator: Matt Hogue  
 Texas A&M AgriLife: Ken Legé, Ph.D.  
 Location: Brownfield, TX (Terry Co)  
 Replicates: 3  
 Plot Size: 8 rows x ~2648'  
 Row Spacing: 40"  
 Beds: No  
 Previous crop(s): Cotton/wheat cover  
 Soil type: Patricia/ Amarillo, Loamy Fine Sand  
 Irrigation: LEPA

Planting Date: 5/16/2024  
 Seed Treatments: Various fungicide+insecticide  
 Moist. @ planting: Fair-Good  
 Soil Temp @ planting: 69F @2"; 70F @6"  
 Seed/Acre: 32,000  
 GPS Lat: 33.257944  
 GPS Long: -102.355306  
 Elevation: 3389  
 Harvest Date:



Orange stakes on southernmost row of each plot at east end

Remainder of field - PHY332W3FE

101	DP2335B3XF	8 rows	Rep 1
102	DP2436NRB3XF	8 rows	
103	FM868AXTP	8 rows	
104	PHY332W3FE	8 rows	
105	PHY415W3FE	8 rows	
106	ST6000AXTP	8 rows	
201	PHY332W3FE	8 rows	Rep 2
202	FM868AXTP	8 rows	
203	ST6000AXTP	8 rows	
204	PHY415W3FE	8 rows	
205	DP2436NRB3XF	8 rows	
206	DP2335B3XF	8 rows	
301	PHY415W3FE	8 rows	Rep 3
302	ST6000AXTP	8 rows	
303	DP2335B3XF	8 rows	
304	DP2436NRB3XF	8 rows	
305	FM868AXTP	8 rows	
306	PHY332W3FE	8 rows	
Remainder of field-PHY332W3FE			



Project # 24-917TX