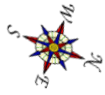
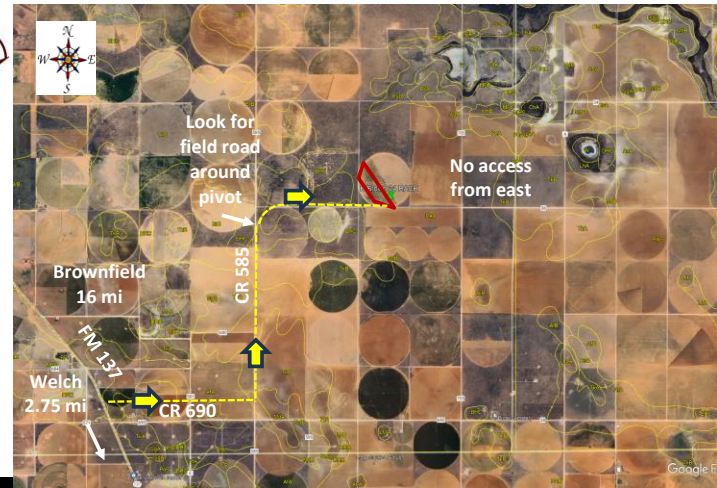


**Replicated Agronomic Cotton Evaluation
XtendFlex Only Location**



Grower Cooperator: Kalith Brown
 Texas A&M AgriLife: Ken Legé, Ph.D.
 Location: Welch, TX (Terry Co)
 Replicates: 3
 Plot Size: 8 rows x ~1/2 mi
 Row Spacing: 40"
 Beds: No
 Previous crop(s): Cotton
 Soil type: Patricia/Amarillo Fine Sandy Loam
 Irrigation: Pivot (~4.2 gpm)

Planting Date: 5/18/2024
 Seed Treatments: Various fungicide+insecticide
 Moist. @ planting: Very Good
 Soil Temp @ planting: 68F @2"; 66.9F @6"
 Seed/Acre: 41,500*
 GPS Lat: 32.993918
 GPS Long: -102.096730
 Elevation: 3133
 Harvest Date:



Flags on east middles; orange stakes on south end on easternmost row of each plot

Remainder of field - FM868AXTP

		● Wellhead			
South turnrow/CR 36	307	FM868AXTP	16 rows	Rep 3	
	306	DP2349NRB3XF	8 rows		
	305	DP2335B3XF	8 rows		
	304	Armor9371B3XF	8 rows		
	303	Armor9413XF	8 rows		
	302	FM765AX	8 rows		
	301	DP2436NRB3XF	8 rows		
	207	FM868AXTP	16 rows		Rep 2
	206	Armor9413XF	8 rows		
	205	Armor9371B3XF	8 rows		
204	DP2436NRB3XF	8 rows			
203	FM765AX	8 rows			
201	DP2349NRB3XF	8 rows			
Rep 1	107	FM868AXTP	16 rows	Rep 1	
	106	FM765AX	8 rows		
	105	DP2436NRB3XF	8 rows		
	104	DP2349NRB3XF	8 rows		
	103	DP2335B3XF	8 rows		
	102	Armor9371B3XF	*Planted at 44,000 seed/A		8 rows
	101	Armor9413XF	*Planted at 44,000 seed/A		8 rows
Remainder of field - FM 868AXTP		● Pivot point			