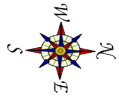
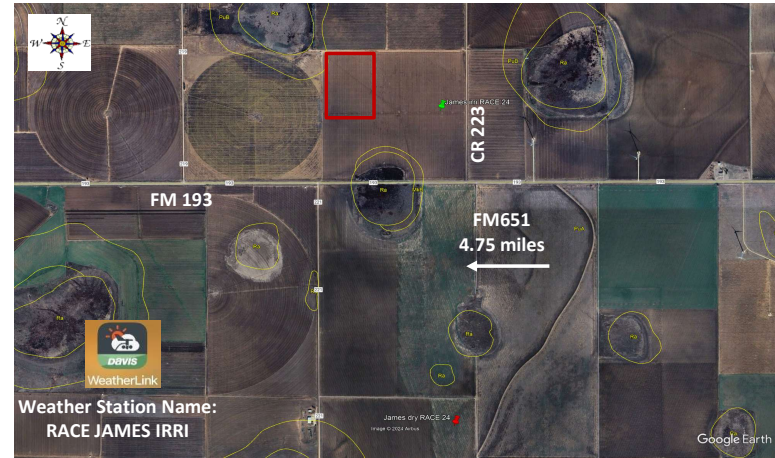


## Replicated Agronomic Cotton Evaluation Mixed Technology

**Grower Cooperator:** Jonathan James  
**County Agent:** Caitlin Frederick, Ph.D.  
**Texas A&M AgriLife:** Ken Legé, Ph.D.  
**Location:** Mt. Blanco, TX (Crosby Co)  
**Replicates:** 3  
**Plot Size:** 12 rows x ~1/4 mi  
**Row Spacing:** 40"  
**Beds:** No  
**Previous crop(s):** Cotton  
**Soil type:** Pullman Silty Clay Loam  
**Irrigation:** Drip (80"; ~3.7 gpma)

**Planting Date:** 5/19/2026  
**Seed Treatments:** Various  
**Moist. @ planting:** Dry  
**Soil Temp @ planting:** 2"- 62F 4"- 62F  
**Seed/Acre:** 40,000  
**GPS Lat:** 33.804379  
**GPS Long:** -101.160784  
**Elevation:** 3056  
**Harvest Date:**



Stakes are on the North side on the far west row.	North turnrow	12 row border of DP1822XF		middle turnrow	
		101	DP1822XF		12 rows
		102	DP2525B3XF		12 rows
		103	FM765AX		12 rows
		104	FM814AXTP		12 rows
		201	DP2525B3XF		12 rows
		202	FM765AX		12 rows
		203	DP1822XF		12 rows
		204	FM814AXTP		12 rows
		301	DP1822XF		12 rows
		302	FM814AXTP		12 rows
		303	FM765AX		12 rows
		304	DP2525B3XF		12 rows
		Remainder of field - DP1822XF and FM765AX			
		Rep 1			
		Rep 2			
		Rep 3			