

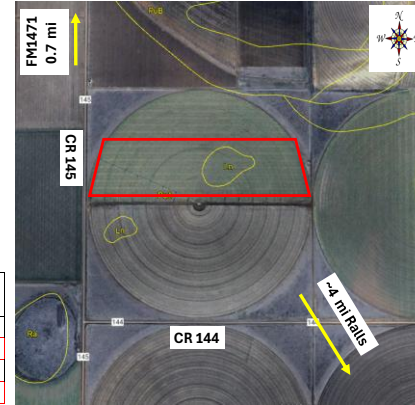


Evaluation of planting systems on the Texas High Plains

Grower Cooperator: Kris Verett
 Texas A&M AgriLife: Rebekah Ortiz
 Location: Ralls, TX (Crosby Co.)
 Replicates: 4
 Plot Size: 12 Rows x ~2640 ft.
 Variety: FM765AX
 Beds: No-till
 Previous crop(s): Rye Radish Mix 20"
 Soil type: Pullman Silty Clay Loam
 Irrigation: Pivot (3 gpm)

Planting Date: 5/20/2026
 Seed Treatments: Fungicide+insecticide
 Moist. @ planting: Dry, but will water to stand
 Soil Temp @ planting: 2": 77F; 6": 74F
 GPS Lat: 33.727422
 GPS Long: -101.418489
 Elevation: 3140
 Harvest Date:

Treatments:	Row Spacing (in.)	Seeds Ft. ⁻¹	Target Seeding Rate A ⁻¹
1	40	1.5	19,602
2	80	1.5	9,801
3	40	3	39,204
4	80	3	19,602



GPS Lines	Row Spacing (in.)	Seeds Ft. ⁻¹	Seeding Rate Acre ⁻¹	Treatment
Remainder of field FM765AX on 40" @ 30,000 seeds/A				
404	16	80	3	19602
403	15	80	1.5	9801
402	14	40	3	39204
401	13	40	1.5	19602
304	12	40	3	39204
303	11	40	1.5	19602
302	10	80	3	19602
301	9	80	1.5	9801
204	8	80	3	19602
203	7	80	1.5	9801
202	6	40	1.5	19602
201	5	40	3	39204
104	4	80	3	19602
103	3	40	3	39204
102	2	80	1.5	9801
101	1	40	1.5	19602
12 Rows between turnrow and trial (FM765AX) Pivot Point				

Notes:
 192 Total Rows
 12 Row Plots
 Linear Ft / A
 40" spacing 13068
 80" spacing 6534
 Seed Rates and Gear Ratio (using 48-hole discs)
 19602 - 19241
 18, 33, 23, 28
 39204 - 39021
 18, 26, 21, 16
 Wide rows were planted from west to east in the even row units.; where a 40" plot is adjacent to an 80" plot, there is a 60" space between adjacent rows.

