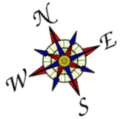
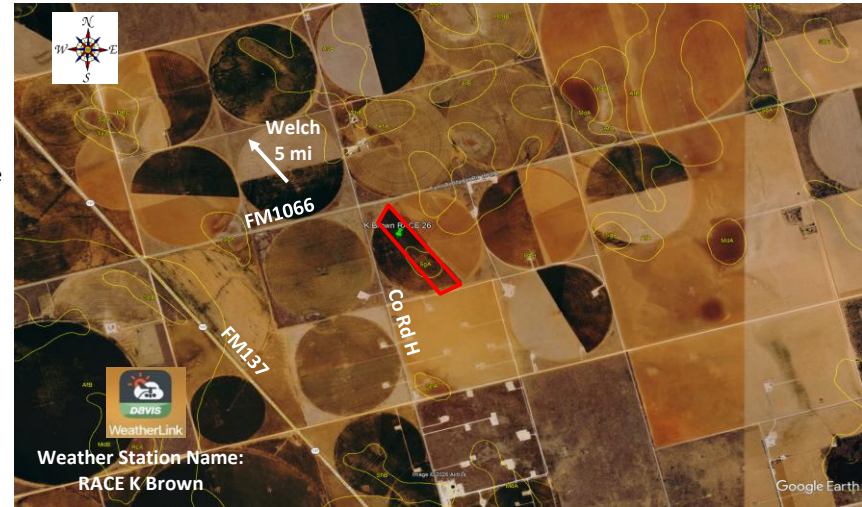




## Replicated Agronomic Cotton Evaluation XtendFlex Technology

Grower Cooperator:	Kalith Brown	Planting Date:	5/22/2026
County Agent:	Hannah Pierce	Seed Treatments:	Various fungicide+insecticide
Texas A&M AgriLife:	Ken Legé, Ph.D.	Moist. @ planting:	Very good
Location:	Welch, TX (Dawson Co)	Soil Temp @ planting:	4" - 65F 2"-70F
Replicates:	3	Seed/Acre:	41,500
Plot Size:	8 rows x ~1/2 mi	GPS Lat:	32.878748
Row Spacing:	40"	GPS Long:	-102.057002
Beds:	No (strip tilled)	Elevation:	3089
Previous crop(s):	Cotton/wheat cover	Harvest Date:	
Soil type:	Patricia/ Amarillo/Seagraves, Loamy Fine Sand/Fine Sandy Loam		
Irrigation:	Pivot (LEPA; light water)		



		Pivot Point			
		16 rows of DP2525B3XF			
FM1066	101	DP2335B3XF	8 rows	Rep 1	Stakes are placed on the northwest side of the far northeast row
	102	DP2525B3XF	8 rows		
	103	DP2644NRXF	8 rows		
	104	FM814AXTP	8 rows		
	105	ST4650AXTP	8 rows		
	106	NG3576XF	8 rows		
	107	FM765AX	16 rows		
	201	FM814AXTP	8 rows	Rep 2	
	202	DP2644NRXF	8 rows		
	203	NG3576XF	8 rows		
204	ST4650AXTP	8 rows			
205	DP2525B3XF	8 rows			
206	DP2335B3XF	8 rows			
207	FM765AX	16 rows			
	301	ST4650AXTP	8 rows	Rep 3	
	302	NG3576XF	8 rows		
	303	DP2335B3XF	8 rows		
	304	DP2525B3XF	8 rows		
	305	DP2644NRXF	8 rows		
	306	FM814AXTP	8 rows		
	307	FM765AX	16 rows		
		Remainder of field - DP2525B3XF			