

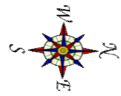
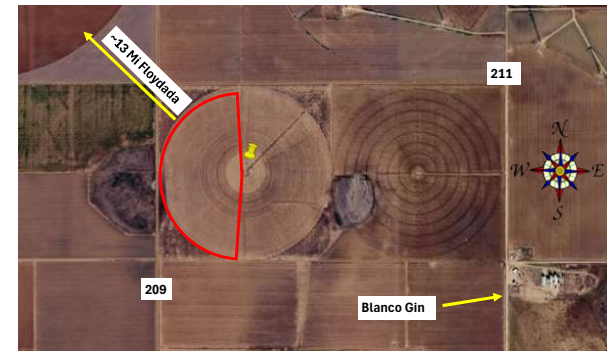


Evaluation of planting systems on the Texas High Plains

Grower Cooperator: Jonathan James
 Texas A&M AgriLife: Rebekah Ortiz
 Location: Floydada, TX
 Replicates: 4
 Plot Size: 12 Rows x ~2640 ft.
 Variety: FM 765AX
 Beds: No
 Previous crop(s): Wheat Straw
 Soil type: Pullman Clay Loam
 Irrigation: Pivot 3 GPMA

Planting Date: 5/26/26
 Seed Treatments: Prime Seed Treatment
 Moist. @ planting: Dry
 Soil Temp @ planting: 2° - F 4° - F
 GPS Lat: 33.839861°
 GPS Long: -101.198167°
 Elevation: 3084
 Harvest Date:

Treatments:	Row Spacing (in.)	Seeds Ft. ⁻¹	Target Seeding Rate A ⁻¹
1	40	1.5	19,602
2	80	1.5	9,801
3	40	3	39,204
4	80	3	19,602



GPS Lines	Row Spacing (in.)	Seeds Ft. ⁻¹	Seeding Rate Acre ⁻¹	Treatment		
Remainder of field - FM765AX						
12 Rows	15	80	3	19602	4	404
12 Rows	14	80	1.5	9801	2	403
12 Rows	13	40	3	39204	3	402
12 Rows	12	40	1.5	19602	1	401
12 Rows	11	40	3	39204	3	304
12 Rows	10	40	1.5	19602	1	303
12 Rows	9	80	3	19602	4	302
12 Rows	8	80	1.5	9801	2	301
12 Rows	7	80	3	19602	4	204
12 Rows	6	80	1.5	9801	2	203
12 Rows	5	40	1.5	19602	1	202
12 Rows	4	40	3	39204	3	201
12 Rows	3	80	3	19602	4	104
12 Rows	2	40	3	39204	3	103
12 Rows	1	80	1.5	9801	2	102
12 Rows	0	40	1.5	19602	1	101
12 Rows between turnrow and trial					Pivot Point	

REP 4	
REP 3	
REP 2	
REP 1	

Notes:	Seeding Rate
192 Total Rows	39204 + 39200
12 Row Plots	19602 + 19600
Linear Ft / A	
40" spacing	13068
80" spacing	6534