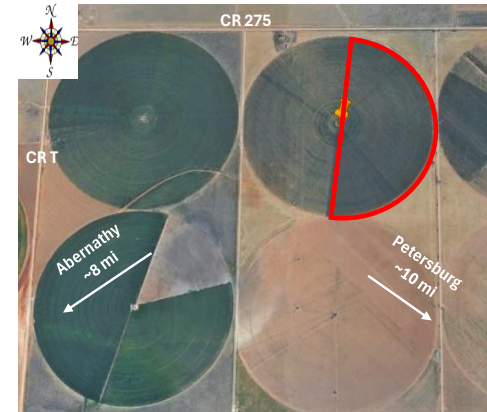




Replicated Agronomic Cotton Evaluation ELS vs Upland/Roller Gin Upland Systems Trial

Grower Cooperator:	Dr. John Wanjura	Planting Date:	5/13/2026
	USDA-ARS	Seed Treatments:	Various
Texas A&M AgriLife:	Ken Legé, Ph.D.	Moist. @ planting:	Adequate
Location:	Petersburg, TX (Hale Co.)	Soil Temp @ planting:	2" - 74.5F 4" - 73F
Replicates:	3	Seed/Acre:	46000
Plot Size:	8 rows x ~1/2 mi	GPS Lat:	33.916
Row Spacing:	40 in	GPS Long:	-101.753283
Beds:	Yes	Elevation:	3332
Previous crop(s):	Cotton	Harvest Date:	
Soil type:	Pullman Clay Loam		
Irrigation:	LEPA		



16 rows of DP1822XF between test and pivot road.		
Rep 1	8 rows	PHY861RF 101
	8 rows	Gowan 1432 102
	8 rows	DP 2525 B3XF 103
	8 rows	FM 765 AX 104
	8 rows	DP1822XF 105
	8 rows	ST6000AXTP 106
	8 rows	BX2712AXTP 107
	8 rows	25R1728B3XF 108
	8 rows	PHY433W3FE 109
	8 rows	NG3576XF 110
Rep 2	8 rows	DP 2525 B3XF 201
	8 rows	FM 765 AX 202
	8 rows	Gowan 1432 203
	8 rows	PHY861RF 204
	8 rows	DP1822XF 205
	8 rows	ST6000AXTP 206
	8 rows	25R1728B3XF 207
	8 rows	PHY433W3FE 208
	8 rows	NG3576XF 209
	8 rows	BX2712AXTP 210
Rep 3	8 rows	Gowan 1432 301
	8 rows	DP 2525 B3XF 302
	8 rows	PHY861RF 303
	8 rows	FM 765 AX 304
	8 rows	DP1822XF 305
	8 rows	NG3576XF 306
	8 rows	25R1728B3XF 307
	8 rows	BX2712AXTP 308
	8 rows	PHY433W3FE 309
	8 rows	ST6000AXTP 310
Remainder of field - DP1822XF		

Stakes are on the North side on the far West row.

CR275