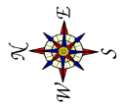
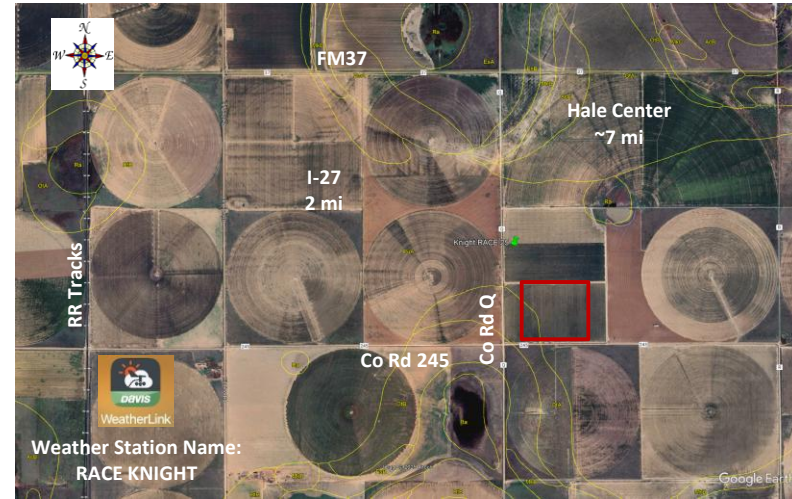




Replicated Agronomic Cotton Evaluation XtendFlex Technology

Grower Cooperator:	Tyson Knight	Planting Date:	5/13/2026
County Agents:	Kristie Keys, Andy Hart	Seed Treatments:	Various fungicide+insecticide
Texas A&M AgriLife:	Ken Legé, Ph.D.	Moist. @ planting:	Dry
Location:	Hale Center, TX (Hale Co.)	Soil Temp @ planting:	2" - 90F; 6" - 80F
Replicates:	3	Seed/Acre:	40,000
Plot Size:	12 rows x ~1120'	GPS Lat:	33.965071
Row Spacing:	40"	GPS Long:	-101.815871
Beds:	No	Elevation:	3369
Previous crop(s):	Cotton/light wheat cover	Harvest Date:	
Soil type:	Pullman Clay Loam		
Irrigation:	Drip (40"; 3 gpm)		



		Field road				
		Remainder of field = DP1822XF				
		GPS line				
North turnrow	101	FM765AX	28	12 rows	Rep 1	
	102	DP2525B3XF	27	12 rows		
	103	DP2335B3XF	26	12 rows		
	104	DP1822XF	25	12 rows		
	105	NG3434B3XF	24	12 rows		
	106	NG3576XF	23	12 rows		
	107	FM814AXTP	22	12 rows		
	108	FM823AXTP	21	12 rows		
	Rep 2	201	DP1822XF	20	12 rows	
		202	DP2335B3XF	19	12 rows	
		203	NG3576XF	18	12 rows	
		204	NG3434B3XF	17	12 rows	
		205	DP2525B3XF	16	12 rows	
		206	FM765AX	15	12 rows	
		207	FM823AXTP	14	12 rows	
		208	FM814AXTP	13	12 rows	
	Rep 3	301	NG3434B3XF	12	12 rows	
		302	NG3576XF	11	12 rows	
		303	FM814AXTP	10	12 rows	
		304	FM823AXTP	9	12 rows	
		305	FM765AX	8	12 rows	
		306	DP2525B3XF	7	12 rows	
		307	DP2335B3XF	6	12 rows	
		308	DP1822XF	5	12 rows	
			48 rows border - DP1822XF			
	Drip shed		Co Rd Q			