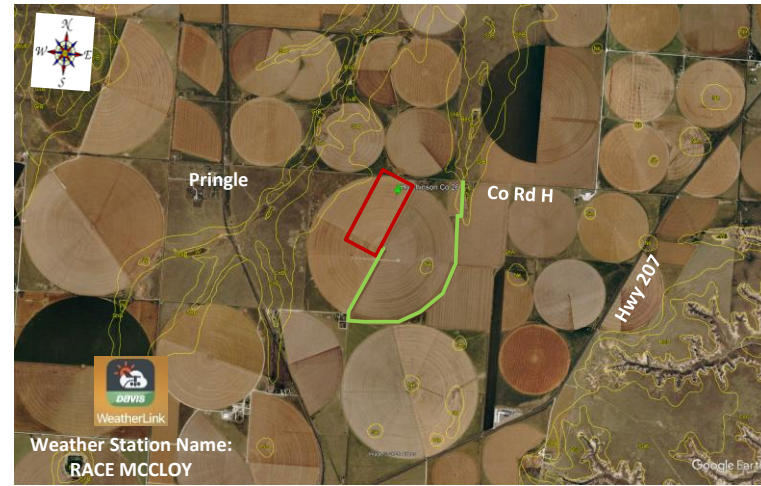




Replicated Agronomic Cotton Evaluation Mixed Technology

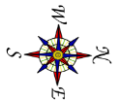
Grower Cooperator: Craig McCloy
 County Agents: Kristy Slough
 Texas A&M AgriLife: Ken Legé, Ph.D.
 Location: Pringle, TX (Hutchinson Co.)
 Replicates: 3
 Plot Size: 4 rows x ~ 3000ft.
 Row Spacing: 40"
 Beds: No
 Previous crop(s): Corn for grain, strip tilled
 Soil type: Sherm Clay Loam
 Irrigation: Pivot (2.7 gpm)

Planting Date: 5/8/2026
 Seed Treatments: Various fungicide+insecticide
 Moist. @ planting: adequate
 Soil Temp @ planting: 2" - 50F 4" - 70F
 Seed/Acre: 60,000
 GPS Lat: 35.948802
 GPS Long: -101.433976
 Elevation: 3344
 Harvest Date:



*For FM varieties and PHY205W3FE and PHY357W3FE rows originally 20 in. shifted but corrected.

*green line is how to reach Southern side of the trial.



Plot	Rows	Variety	Notes
Remainder of field -			
101	4 rows	DP1822XF	
102	4 rows	DP2525B3XF	
103	4 rows	FM765AX	
104	4 rows	FM757AXTP	
105	4 rows	PHY205W3FE	
106	3 rows	PHY357W3FE	
107	4 rows	DG3215B3XF	(grower provided standard)
108	4 rows	PHY1102H280-04W3FE	(grower provided standard)
201	4 rows	PHY1102H280-04W3FE	(grower provided standard)
202	4 rows	DG3215B3XF	(grower provided standard)
1 row blank row between plot 202 and 203			
203	4 rows	PHY357W3FE	
204	4 rows	PHY205W3FE	
205	4 rows	FM757AXTP	
206	4 rows	FM765AX	
207	4 rows	DP2525B3XF	
208	4 rows	DP1822XF	
301	4 rows	DP1822XF	
302	4 rows	DP2525B3XF	
303	4 rows	FM765AX	
304	4 rows	FM757AXTP	
305	4 rows	PHY205W3FE	
306	3 rows	PHY357W3FE	
307	4 rows	DG3215B3XF	(grower provided standard)
308	4 rows	PHY1102H280-04W3FE	(grower provided standard)
Pivot Point			
Remainder of field -			

Stakes are on the far west row