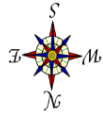
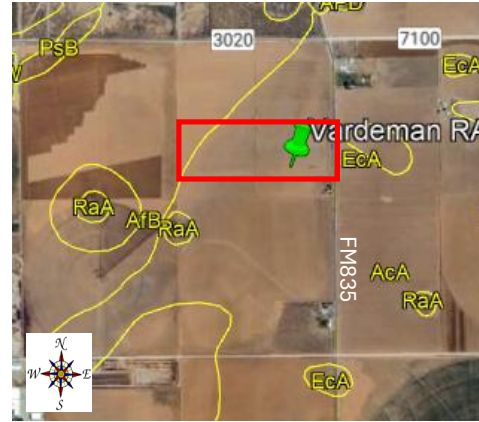




RACE
Replicated Agronomic Cotton Evaluation

**Replicated Agronomic Cotton Evaluation
Mixed Technology**

Grower Cooperator:	Vardeman Farms	Planting Date:	5/22/2026
Texas A&M AgriLife:	Ken Legé, Ph.D.	Seed Treatments:	Various fungicide+insecticide
Location:	Lubbock, TX (Lubbock Co)	Moist. @ planting:	Very Good
Replicates:	3	Soil Temp @ planting:	2": 85F; 6": 78F
Plot Size:	8 rows x ~2640'	Seed/Acre:	42,000
Row Spacing:	40"	GPS Lat:	33.514369
Beds:	No	GPS Long:	-101.730469
Previous crop(s):	Cotton	Elevation:	3143
Soil type:	Acuff Loam/Amarillo Fine Sandy Loam	Harvest Date:	
Irrigation:	Drip (80"; ~5gpm)		



Orange stakes on southernmost row of each plot on east end.

house			
112 rows from South side			
FM 835	101	DP2525B3XF <i>NOTE: this plot planted at 45,000 seed/acre</i> 8 rows	
	102	DP2644NRXF 8 rows	
	103	FM765AX 8 rows	
	104	FM814AXTP 8 rows	
	105	PHY357W3FE 8 rows	
	106	PHY433W3FE 8 rows	
	107	NG3434B3XF 8 rows	
	108	NG3576XF 8 rows	
	109	ST5931AXTP (grower-provided standard) 8 rows	
	201	NG3576XF 8 rows	
	202	FM814AXTP 8 rows	
	203	NG3434B3XF 8 rows	
	204	FM765AX 8 rows	
	205	DP2644NRXF 8 rows	
	206	DP2525B3XF <i>NOTE: this plot planted at 45,000 seed/acre</i> 8 rows	
	207	PHY433W3FE 8 rows	
	208	PHY357W3FE 8 rows	
	209	ST5931AXTP (grower-provided standard) 8 rows	
	301	FM765AX 8 rows	
	302	FM814AXTP 8 rows	
	303	DP2525B3XF 8 rows	
	304	DP2644NRXF 8 rows	
	305	NG3434B3XF 8 rows	
	306	NG3576XF 8 rows	
	307	PHY357W3FE 8 rows	
	308	PHY433W3FE 8 rows	
	309	ST5931AXTP (grower-provided standard) 8 rows	
	Remainder of field		
			Rep 1
			Rep 2
		Rep 3	
		West Turnrow	