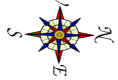
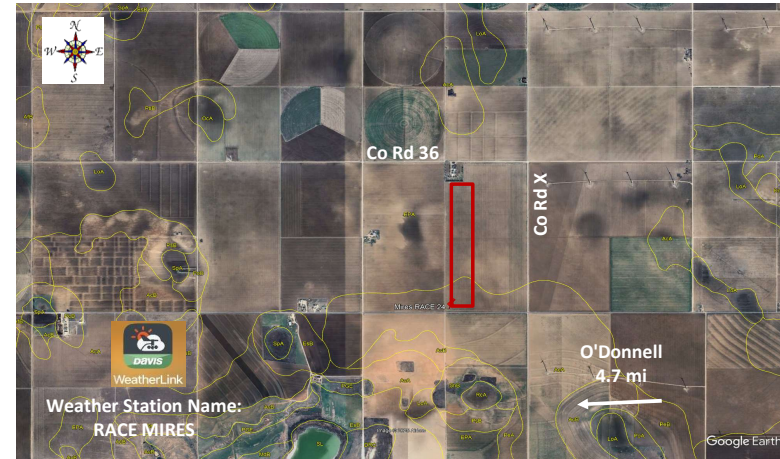




Replicated Agronomic Cotton Evaluation XtendFlex Technology

Grower Cooperator: Landon Mires
 County Agent: Sierra Stephens
 Texas A&M AgriLife: Ken Legé, Ph.D.
 Location: O'Donnell, TX (Lynn Co)
 Replicates: 3
 Plot Size: 12 rows x ~4340'
 Row Spacing: 40"
 Beds: No
 Previous crop(s): Cotton
 Soil type: Estacado/Pep, Acuff Loams
 Irrigation: None

Planting Date: 5/25/2026
 Seed Treatments: Various fungicide+insecticide
 Moist. @ planting: Dry
 Soil Temp @ planting: 4"- 76F 2"- 82F
 Seed/Acre: 26,000
 GPS Lat: 32.976915
 GPS Long: -101.745634
 Elevation: 3015
 Harvest Date:



Stakes are placed on the South end on the far West row	24 rows border - DP2123XF				
	FM2053	101	DP2239B3XF	12 rows	Rep 1
		102	DP2335B3XF	12 rows	
		103	DP2644NRXF	12 rows	
		104	FM765AX	12 rows	
		105	ST5855AXTP	12 rows	
		106	ST5931AXTP	12 rows	
	Rep 2	201	DP2335B3XF	12 rows	north turnrow near house
		202	DP2239B3XF	12 rows	
		203	FM765AX	12 rows	
		204	DP2644NRXF	12 rows	
		205	ST5931AXTP	12 rows	
		206	ST5855AXTP	12 rows	
Rep 3	301	DP2239B3XF	12 rows	* Plots 303 & 304 are ~ .5 mile long. Plots end at 32.984170°, -101.743890°	
	302	DP2335B3XF	12 rows		
	303	ST5855AXTP	12 rows		
	304	ST5931AXTP	12 rows		
	305	DP2644NRXF	12 rows		
	306	FM765AX	12 rows		
Remainder of field - DP2123XF & DP1845B3XF					