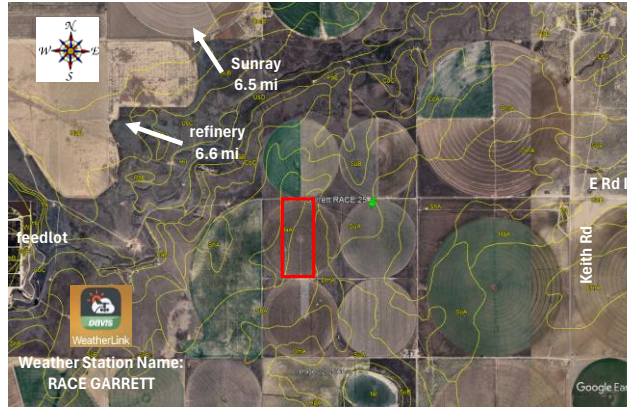




Replicated Agronomic Cotton Evaluation Mixed Technology

Grower Cooperator: Justin Garrett
 County Agents: Dennis Coker, Ph.D.; Marcel Fischbacher
 Texas A&M AgriLife: Ken Legé, Ph.D.
 Location: Sunray, TX (Moore Co)
 Replicates: 3
 Plot Size: 8 rows x 1/2 mile
 Row Spacing: 30"
 Beds: No
 Previous crop(s): Wheat, strip tilled
 Soil type: Sunray Loam/Gruver Clay Loam
 Irrigation: Pivot (3.1 gpm)

Planting Date: 5/9/2026
 Seed Treatments: Various fungicide+insecticide
 Moist. @ planting: adequate
 Soil Temp @ planting: 2" - 80F 4" - 71F
 Seed/Acre: 70,000
 GPS Lat: 35.933234
 GPS Long: -101.770986
 Elevation: 3472
 Harvest Date:



Remainder of field - DP2525B3XF		
101	DP1822XF	8 rows
102	DP2525B3XF	8 rows
103	FM757AXTP	8 rows
104	FM765AX	8 rows
105	PHY205W3FE	8 rows
106	PHY357W3FE	8 rows
107	PHY433W3FE	8 rows
108	NG3434B3XF	8 rows
109	NG3576XF	16 rows
201	FM765AX	8 rows
202	FM757AXTP	8 rows
203	PHY205W3FE	8 rows
204	PHY357W3FE	8 rows
205	NG3434B3XF	8 rows
206	PHY433W3FE	8 rows
207	DP2525B3XF	8 rows
208	DP1822XF	8 rows
209	NG3576XF	16 rows
8 rows	Filler	8 rows
8 rows	Filler	8 rows
8 rows	Filler	8 rows
8 rows	Filler	8 rows
301	DP1822XF	8 rows
302	DP2525B3XF	8 rows
303	FM757AXTP	8 rows
304	FM765AX	8 rows
305	PHY205W3FE	8 rows
306	PHY357W3FE	8 rows
307	PHY433W3FE	8 rows
308	NG3434B3XF	8 rows
309	NG3576XF	8 rows
Remainder of field - DP2525B3XF		

South End (left side)
 North End (right side)
 Stakes are on the far west row (left side)
 Pivot Point (red dot in the center of the field)