



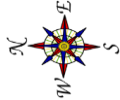
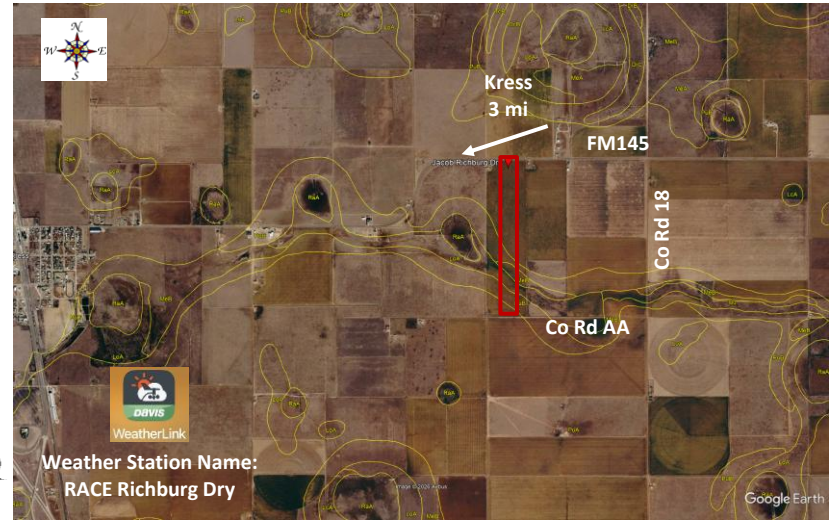
Replicated Agronomic Cotton Evaluation

XtendFlex Technology

Replicated Agronomic Cotton Evaluation

Grower Cooperator: Jacob Richburg
 County Agent: Jason Wade
 Texas A&M AgriLife: Ken Legé, Ph.D.
 Location: Kress, TX (Swisher Co)
 Replicates: 3
 Plot Size: 8 rows x 1 mi
 Row Spacing: 40"
 Beds: No till
 Previous crop(s): Wheat fallow
 Soil type: Pullman Clay Loam
 Irrigation: None

Planting Date: 5/19/2026
 Seed Treatments: Various fungicide+insecticide
 Moist. @ planting: Dry
 Soil Temp @ planting: 2": 79F; 6": 72F
 Seed/Acre: 25,173 (actual avg)
 GPS Lat: 34.374447
 GPS Long: -101.695574
 Elevation: 3435
 Harvest Date:



Orange stakes on the north end on the easternmost row of each plot

Remainder of field - DP1822XF			
FM145	101	DP1822XF	8 rows
	102	DP2123B3XF	8 rows
	103	DP2525B3XF	8 rows
	104	FM757AXTP	8 rows
	105	FM765AX	8 rows
	106	FM868AXTP	8 rows
	201	DP2123B3XF	8 rows
	202	DP1822XF	8 rows
	203	FM757AXTP	8 rows
	204	DP2525B3XF	8 rows
	205	FM868AXTP	8 rows
	206	FM765AX	8 rows
	301	DP1822XF	8 rows
	302	DP2123B3XF	8 rows
	303	FM765AX	8 rows
	304	FM868AXTP	8 rows
305	DP2525B3XF	8 rows	
306	FM757AXTP	8 rows	
Remainder of field - DP1822			
		Rep 1	Co Rd AA
		Rep 2	
		Rep 3	