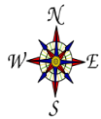
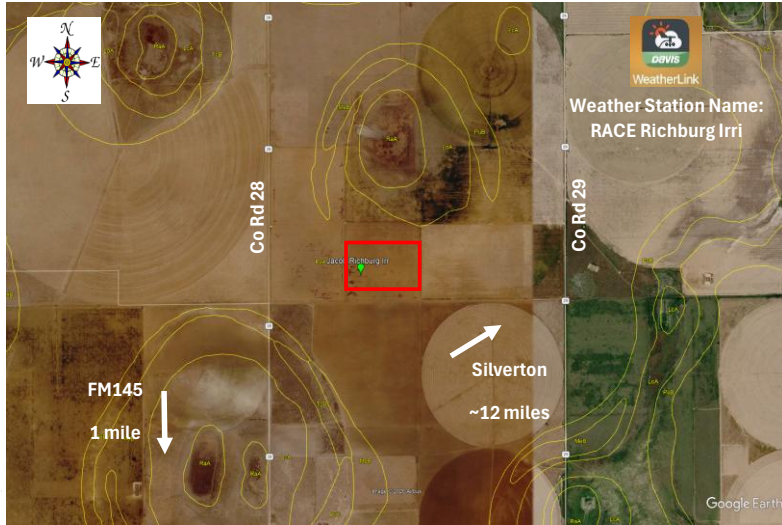




## Replicated Agronomic Cotton Evaluation XtendFlex Technology

Grower Cooperator:	Jacob Richburg	Planting Date:	5/26/2026
County Agent:	Jason Wade	Seed Treatments:	Various fungicide+insecticide
Texas A&M Agrilife:	Ken Legé, Ph.D.	Moist. @ planting:	Very good
Location:	Kress, TX (Swisher Co)	Soil Temp @ planting:	2": 75F; 6": 72F
Replicates:	3	Seed/Acre:	38,500
Plot Size:	8 rows x 1/4 mi	GPS Lat:	34.3916442
Row Spacing:	40"	GPS Long:	-101.49974
Beds:	No (tilled)	Elevation:	3328
Previous crop(s):	Corn	Harvest Date:	
Soil type:	Pullman Clay Loam		
Irrigation:	Drip (40"; 2 gpma at planting; 6 gpma during bloom)		



Orange stakes on west end on northernmost row of each plot

32 rows border - DP1822XF				
west turnrow	101	DP1822XF	16 rows	Rep 1
	102	DP2525B3XF	16 rows	
	103	FM765AX	16 rows	
	104	FM814AXTP	16 rows	
	105	FM823AXTP	16 rows	
	201	DP1822XF	16 rows	Rep 2
	106	NG3434B3XF	16 rows	
	107	NG3576XF	16 rows	
	202	FM814AXTP	16 rows	
	203	FM765AX	16 rows	
204	DP2525B3XF	16 rows	Rep 3	
205	NG3434B3XF	16 rows		
206	FM823AXTP	16 rows		
207	NG3576XF	16 rows		
301	FM823AXTP	16 rows		
302	NG3434B3XF	16 rows	east turnrow	
303	DP1822XF	16 rows		
304	DP2525B3XF	16 rows		
305	FM765AX	16 rows		
306	FM814AXTP	16 rows		
307	NG3576XF	16 rows		
32 rows border - DP1822XF				