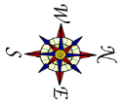
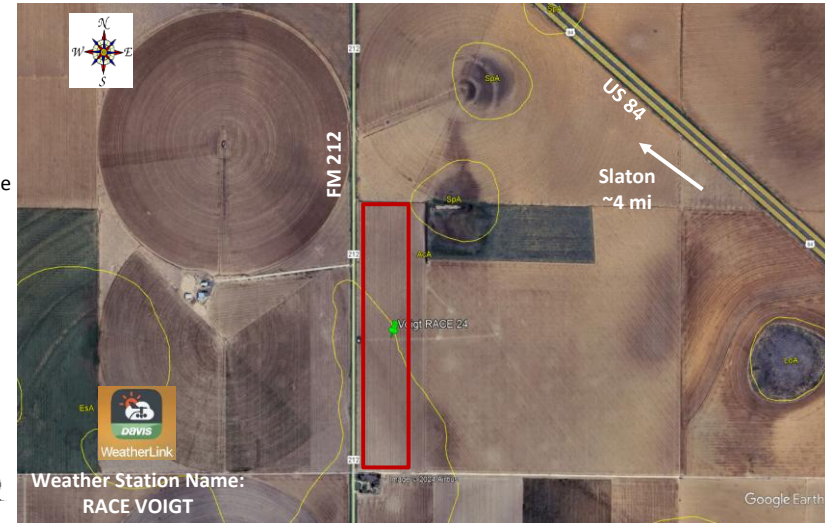




Replicated Agronomic Cotton Evaluation Mixed Technology - Reniform site

Grower Cooperator:	Van & Kyle Voigt	Planting Date:	6/2/2026
County Agent:	Sierra Stephens	Seed Treatments:	Various fungicide+insecticide
Texas A&M AgriLife:	Ken Legé, Ph.D.	Moist. @ planting:	Good
Location:	Slaton, TX (Lynn Co)	Soil Temp @ planting:	2": 77F; 6": 74F
Replicates:	3	Seed/Acre:	41,000
Plot Size:	8 rows x ~1/2 mi	GPS Lat:	33.378324
Row Spacing:	40"	GPS Long:	-101.600214
Beds:	No	Elevation:	3050
Previous crop(s):	Cotton (reniform-resistant variety) /rye cover	Harvest Date:	
Soil type:	Estacado/Acuff Loam		
Irrigation:	Drip (80"; 4-5 gpm)		



Flags and orange stakes on south end on westernmost row of each plot

		FM212			
8 rows border - PHY332W3FE					
South turnrow	8 rows	DP2141NRB3XF	101	Rep 1	North turnrow
	8 rows	DP2522NRB3TXF	102		
	8 rows	ST5260AXTP	103		
	8 rows	ST5931AXTP	104		
	8 rows	PHY357W3FE	105		
	8 rows	PHY433W3FE	106		
	8 rows	PHY332W3FE (grower provided standard)	107		
	8 rows	DP2522NRB3TXF	201	Rep 2	
	8 rows	ST5931AXTP	202		
	8 rows	ST5260AXTP	203		
	8 rows	DP2141NRB3XF	204		
	8 rows	PHY357W3FE	205		
	8 rows	PHY433W3FE	206		
	8 rows	PHY332W3FE (grower provided standard)	207	Rep 3	
	8 rows	ST5931AXTP	301		
	8 rows	DP2141NRB3XF	302		
8 rows	PHY433W3FE	303			
8 rows	PHY357W3FE	304			
8 rows	DP2522NRB3TXF	305			
8 rows	ST5260AXTP	306			
8 rows	PHY332W3FE (grower provided standard)	307			
Remainder of field - PHY332W3FE					