



## Evaluation of planting systems on the Texas High Plains

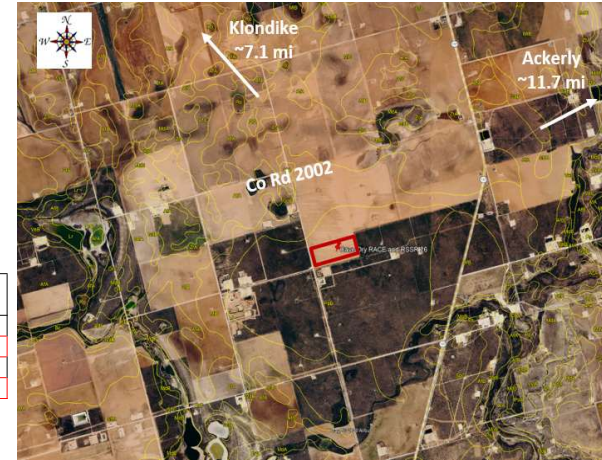
Grower Cooperator: Justin Cave  
 Texas A&M AgriLife: Rebekah Ortiz  
 Location: Klondike, TX (Martin Co)  
 Replicates: 3  
 Plot Size: 16 Rows x ~2640 ft.  
 Variety: DP2335B3XF  
 Beds: No  
 Previous crop(s): Winter Wheat  
 Soil type: Patricia Sand  
 Irrigation: none

Planting Date: 6/2/2026  
 Seed Treatments: Various fungicide+insecticide  
 Moist. @ planting: Adequate  
 Soil Temp @ planting: 2" - 96F 4"-86F  
 GPS Lat: 32.465499  
 GPS Long: -101.905826  
 Elevation: 2735  
 Harvest Date:



Treatments:	Row Spacing (in.)	Seeds Ft. <sup>-1</sup>	Target Seeding Rate A <sup>-1</sup>
1	40	1.5	19,602
2	80	1.5	9,801
3	40	2	26,136
4	80	2	13,068

Row Spacing (in.)      Seeds Ft. <sup>-1</sup>      Seeding Rate Acre <sup>-1</sup>      Treatment



Plot ID	Row Spacing (in.)	Seeds Ft. <sup>-1</sup>	Seeding Rate Acre <sup>-1</sup>	Treatment	Rows
Remainder of field DP2335B3XF and DP1646B2XF					
304	40	2	26136	3	16 rows
303	40	1.5	19602	1	16 rows
302	80	2	13068	4	16 rows
301	80	1.5	9801	2	16 rows
204	80	2	13068	4	16 rows
203	80	1.5	9801	2	16 rows
202	40	1.5	19602	1	16 rows
201	40	2	26136	3	16 rows
104	80	2	13068	4	16 rows
103	40	2	26136	3	16 rows
102	80	1.5	9801	2	16 rows
101	40	1.5	19602	1	16 rows
Remainder of field variety RACE trial					

Stakes are on the Westside on the far South row.

REP 3

REP 2

REP 1