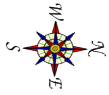
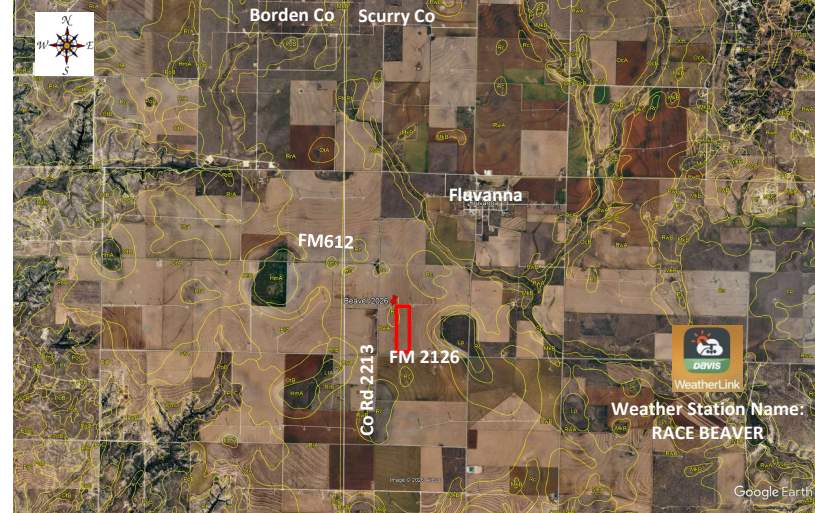


Replicated Agronomic Cotton Evaluation XtendFlex Technology

Grower Cooperator: Chad Beaver
 County Agent: Derek Coffman
 Texas A&M AgriLife: Ken Legé, Ph.D.
 Location: Fluvanna, TX (Scurry Co)
 Replicates: 3
 Plot Size: 8 rows x ~1/2 mi
 Row Spacing: 40"
 Beds: No
 Previous crop(s): cotton
 Soil type: Roscoe Clay/Pyron Clay Loam
 Irrigation: None

Planting Date: 6/2/2026
 Seed Treatments: Various fungicide+insecticide
 Moist. @ planting: Dry
 Soil Temp @ planting: 2" 86F 4" 80F
 Seed/Acre: 26,000
 GPS Lat: 32.868508
 GPS Long: -101.164796
 Elevation: 2676
 Harvest Date:



FM2126	Remainder of field - NexGen			
	8 rows	DP2239B3XF	101	
	8 rows	DP2335B3XF	102	
	8 rows	DP2644NRXF	103	
	8 rows	FM765AX	104	
	8 rows	ST5855AXTP	105	
	8 rows	ST5931AXTP	106	
	8 rows	NG4626B3XF	107	
	8 rows	NG5430B3XF	108	
	8 rows	ST5855AXTP	201	
	8 rows	ST5931AXTP	202	
	8 rows	DP2239B3XF	203	
	8 rows	DP2335B3XF	204	
	8 rows	NG4626B3XF	205	
	8 rows	DP2644NRXF	206	
	8 rows	NG5430B3XF	207	
	8 rows	FM765AX	208	
	8 rows	DP2239B3XF	301	
	8 rows	DP2335B3XF	302	
	8 rows	DP2644NRXF	303	
	8 rows	FM765AX	304	
	8 rows	ST5855AXTP	305	
	8 rows	ST5931AXTP	306	
	8 rows	NG4626B3XF	307	
	8 rows	NG5430B3XF	308	
	Remainder of field - NexGen			
				Rep 1
				Rep 2
				Rep 3

Stakes are on the East side on the far North row.